



THE FRANKLIN MINT

2010



RTL0093



6 72151 12340 4

**AUTHORIZED
HARLEY-DAVIDSON®**

FRANKLIN MINT PRECISION MODELS AND MERCHANDISE

PRECISION MODELS AND MERCHANDISE



**WELCOME TO YOUR 2010 AUTHORIZED HARLEY-DAVIDSON®
FRANKLIN MINT PRECISION MODELS AND MERCHANDISE CATALOG!**

Dear Harley-Davidson Dealer,

We are very proud to be in our 18th year of developing officially-licensed products for the Harley-Davidson® Dealer Network. It has been our pleasure to service your accounts during this time with compelling, innovative and exclusive products. We have had many successes during that time that will fuel the future with even more great products!

For 2010, we have made numerous improvements to your dealer program, including more products, additional service personnel, improved product catalogs, a new Display Case Service Program and a dealer FTP site, to name a few. Another major focus will be the addition of more field service representatives where you need them most – visiting your dealerships!

We will continue our strategy of developing products based on dealer feedback! Many of our most recent successes have been borne out of dealership visits – the top-selling Crossroads Birthstone Rings and Necklaces is one shining example. Developing products with your particular needs in mind is something we plan to significantly increase going forward.

To maximize your success, be sure you carry a solid complement of our top-selling Jewelry, proven Pocket Watches, world-renowned Precision Die-cast Models and our many other unique statement pieces. And don't forget our up-and-coming Coin Products – new and novel concepts where we actually enhance genuine U.S. currency!

Also, make sure you obtain our industry-leading display case. Countless dealers have experienced significant sales increases with this merchandising powerhouse. With its state-of-the-art design and virtually endless display possibilities, this versatile display is a must-have cornerstone for any Harley-Davidson® dealer. We've made it very easy for you to obtain this vital sales tool; if you have not acquired one already, then you are surely missing out!

Besides developing leading-edge, world-class products, The Franklin Mint is also committed to being an ever-improving partner – constantly seeking new ways to help improve your program and strengthen your position in the industry. We realize today there are unique challenges in the marketplace, and more than ever you will require a partner fully committed to your success!

Best Regards,

Chris Lyons, Sales Director

PS: To place orders or for more information, email us at dealer@franklinmint.com, or call or fax us at:
U.S. Phone: 1-800-974-7789 Fax: 1-610-884-4758 International Phone: 1-610-884-4649



© 2010 H-D. All Rights Reserved.
Manufactured by The Franklin Mint under license from Harley-Davidson Motor Company.



**FOR INNOVATION, EXCELLENCE
AND FULL-THROTTLE EXCITEMENT,
THERE'S NOTHING LIKE A**

FRANKLIN MINT PRECISION MODEL!



**Each model is precision-engineered and
packed with authentic detail that will stand up
to the closest inspection.**

Look for New Products!



Ladies' Birthstone Rings & Necklaces

Harley-Davidson® Crossroads Birthstone Rings

Each ring is emblazoned with the Harley-Davidson® name on a setting of solid .925 sterling silver that forms two diverging roads. At their juncture...a lustrous, semi-precious birthstone of your choice.

Available in full sizes only, 5-10. Enlarged to show detail.



January
Ring – Garnet
Indicate size.
D4J8881 Necklace



February
Ring – Amethyst
Indicate size.
D4J8882 Necklace



March
Ring – Aqua Blue Topaz
Indicate size.
D4J8883 Necklace



April
Ring – White Topaz
Indicate size.
D4J8884 Necklace



May
Ring – Faux Emerald
Indicate size.
D4J8885 Necklace



June
Ring – Freshwater Pearl
Indicate size.
D4J8886 Necklace

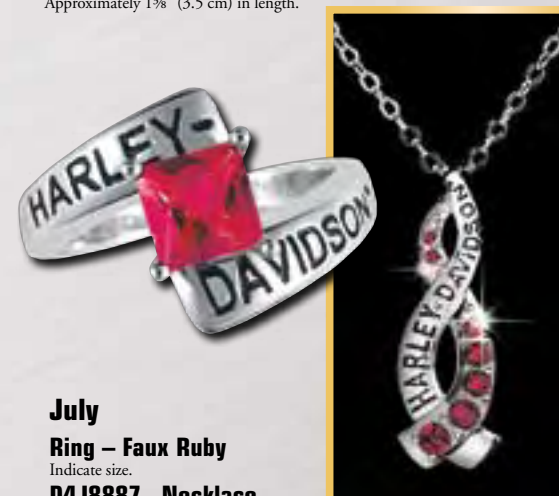
Ladies' Birthstone Rings & Necklaces

Harley-Davidson® Crossroads Birthstone Necklaces

NEW! Where do the freedom of the open road and your passion for fashion meet? Easy. At the crossroads of this dazzling jeweled confection created especially for the "Harley" enthusiast. The Harley-Davidson® name is engraved in bold letters on a swirling setting of solid sterling silver. The centerpiece—7 Austrian crystals in your choice of birthstone colors set at the crossroads of this must-have fashion statement.

NEW!

Approximately 1 3/8" (3.5 cm) in length.



July
Ring – Faux Ruby
Indicate size.
D4J8887 Necklace



August
Ring – Peridot
Indicate size.
D4J8888 Necklace



September
Ring – Faux Sapphire
Indicate size.
D4J8889 Necklace



October
Ring – Pink Topaz
Indicate size.
D4J8890 Necklace



November
Ring – Citrine
Indicate size.
D4J8891 Necklace



December
Ring – Blue Zircon
Indicate size.
D4J8892 Necklace

HARLEY-DAVIDSON® LADIES' JEWELRY

HARLEY-DAVIDSON® LADIES' JEWELRY



D4J8969 Live To Ride Necklace
D4J8970 Live To Ride Bracelet

NEW!

NEW! Whether you Live to Ride or Ride to Live, you'll love to wear this stunning necklace and bracelet with stylish Bar & Shield toggle closure. Crafted of sculptured metal bearing the classic Harley-Davidson® slogan, kissed with black nickel, rich rhodium and gleaming 24 karat gold.

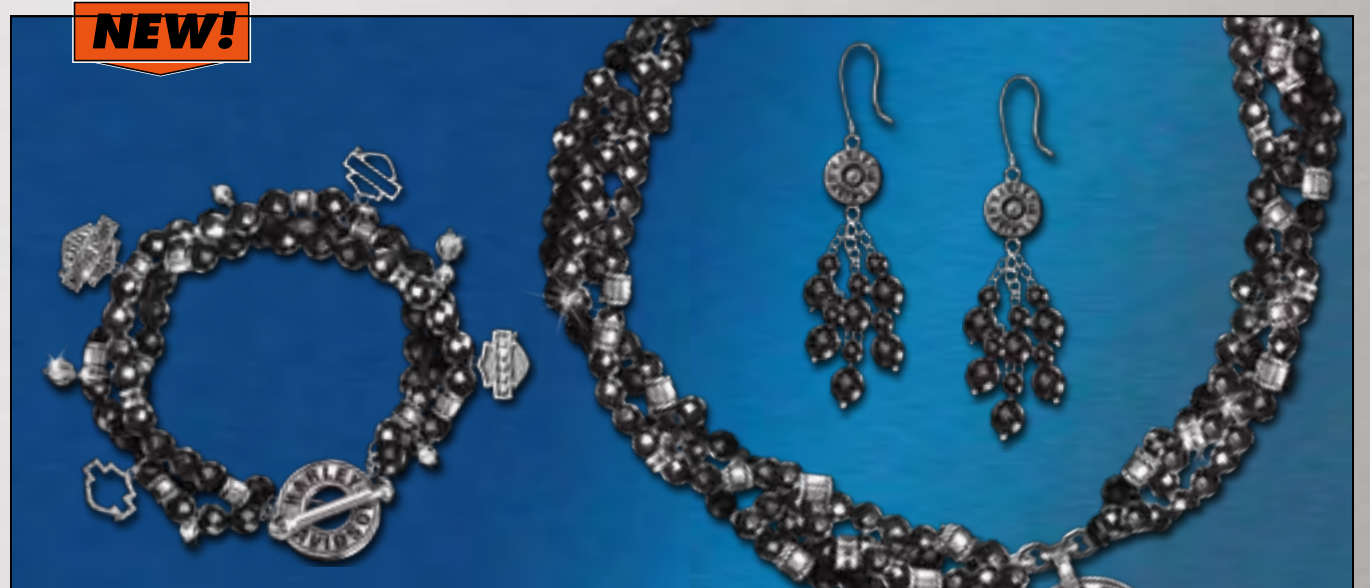
Necklace approximately 18" in length. Bracelet fits wrists up to 7.5" in diameter.



D4J8590 Open Spaces Necklace
D4J8591 Open Spaces Earrings

Your heart craves wide open spaces, bold lines and Harley-Davidson®. Let your style reflect it, too. Sterling silver charms accented with 24 karat gold and marcasite stones.

Enlarged to show detail. Pendant approximately 1 3/8" (3.5 cm) wide x 1" (2.5) long. Chain 18" (45.7 cm) in overall length. French hook earrings approximately 1 1/8" (2.9 cm) long.



NEW!

D4J8937 Black Onyx Necklace **D4J8879 Black Onyx Bracelet**
D4J8936 Black Onyx Earrings

NEW! From edgy to elegant, this classic black onyx jewelry suite dresses up or down for any occasion. Faceted black onyx beads and richly sculptured spacers weave a spell of sparkling mystery. Both the necklace and bracelet feature a high-fashion sterling silver toggle clasp accented with genuine Austrian crystals. To complete the look, black onyx earrings are the perfect complement. Descending from sculptured sterling silver roundels, faceted black onyx beads swing and sparkle in eye-catching style.

Necklace approximately 20" (50.8 cm) in overall length. French hook earrings approximately 2" (5 cm) long. Bracelet approximately 7 3/4" (19.6 cm) in overall length.



D5J8245 Basic Black Leather Necklace
D6J8245 Basic Black Earrings

For women who know black goes with everything. Incorporating skillfully sculpted "Harley-Davidson" logos, each piece is crafted of solid sterling silver. Necklace has a rich, black corded leather strap.

Pendant approximately 1 3/4" (4.5 cm) wide. 16" (40.6 cm) strap. French hook earrings approximately 3/4" (1.9 cm) wide.



D4J8657 Wings of Wonder Necklace
D4J8854 Wings of Wonder Earrings

Spread your wings and fly to new heights of fashion-forward style. The necklace and earrings are crafted of solid sterling silver accented in gold; the boldly shaped pendant features the "H-D" Bar & Shield logo flanked by eagle wings. The earrings are a perfect match.

Enlarged to show detail. Pendant approximately 1 1/2" (3.8 cm) long. Chain 18" (45.7 cm) in overall length. French hook earrings approximately 1" (2.5 cm) long.



D4J8644 Dangerous Curves Necklace
D4J8851 Dangerous Curves Earrings

The necklace and earrings have curves of pure sterling silver embracing the classic "Harley-Davidson" logo, lavished in 24 karat gold. As an elegant final touch, an onyx teardrop, as deep and alluring as the midnight sky. The earrings are a perfect match for a stunning ensemble.

Enlarged to show detail. Pendant approximately 1 7/8" (4.8 cm) long. Chain 18" (45.7 cm) in length. Pierced post earrings approximately 1" (2.5 cm) long.



D4J8597 Barbed Wire Necklace
D4J8855 Barbed Wire Earrings

Intricate twists and turns of barbed wire capture the heart of Harley-Davidson® in this stunning sterling silver jewelry suite. The necklace has faceted stations on the chain. Both feature the Bar & Shield logo, accented with 24 karat gold.

Enlarged to show detail. Center heart approximately 3/4" (1.9 cm) wide x 3/4" (1.9 cm) high. Chain 18" (45.7 cm) in overall length. French hook earrings approximately 1 1/8" (2.9 cm) long.



D4J5419 Tribal Necklace **D5J7830 Tribal Bracelet**
D4J8853 Tribal Earrings

Celebrate your freedom and your "Harley" pride with this unique necklace and earrings featuring the Bar & Shield logo. "Flame-like" background is sculpted in sterling silver and accented with 24 karat gold. Bracelet crafted in solid rhodium-coated brass accented with 24 karat gold.

Enlarged to show detail. Necklace approximately 18" (45.7 cm) in length. Bracelet fits wrists up to 7" (17.8 cm) in diameter. Pierced post earrings approximately 1" (2.5 cm) long.



D4J8870 Silver Triple-Strand Necklace

NEW!

NEW! Accented with sparkling white topaz gemstones, this magnificent three-strand silver necklace dances with layer upon layer of Harley-Davidson® Bar & Shield logos, crafted in solid sterling silver and dazzling with details.

Necklace approximately 18" (45.7 cm) in overall length.



D4J7888 Harley-Davidson® Silver Charm Necklace

The spirit of Harley® captured in a necklace that allows you to choose from six interchangeable charms. Each sculpted in sterling silver, rich with accents of 24 karat gold. Each depicting a well-known Harley® emblem. Complete with custom presentation case and sterling silver chain.

Chain approximately 18" (45.7 cm) in length. Charms approximately ½" (1.3 cm) to ¾" (1.9 cm) long. Enlarged to show detail.



D4J8592 Wings of Steel Necklace
D4J8593 Wings of Steel Earrings

Solid sterling silver, a pair of tribal-style butterflies frame the classic "Harley-Davidson" logo, studded with genuine marcasites. A perfect onyx drop pendant completes this necklace. Each earring has a genuine black onyx bead descending from the "Harley-Davidson" logo, accented with sparkling marcasites.

Enlarged to show detail. Necklace center wings approximately 1¼" (4.4 cm) wide x 1" (2.5 cm) high. Chain 18" (45.7 cm) in overall length. Pierced post earrings approximately ½" (1.3 cm) wide x ¾" (1.9 cm) long.



D4J8978 Custom Chrome Pendant

NEW!

NEW! Customize your look with head-turning, heart-thumping Harley-Davidson® style. Stunning sculptured sterling silver pendant is polished to chrome-like finish and accented with rich black enamel. Complete with stylish box-link chain.

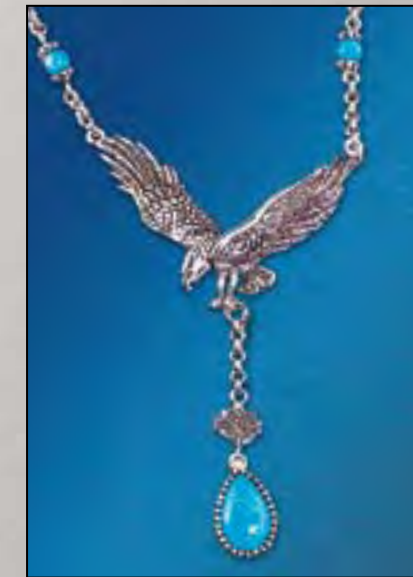
Pendant approximately 1¾" (3.5 cm) in diameter. Chain approximately 22" (55.8 cm) in length and ⅝" (3 mm) wide.



D4J5418 Freedom Pendant

A lifestyle statement for women who embrace the spirit of freedom. The pendant is sculptured in antiqued solid sterling silver, centered with a genuine pearl, beautified in midnight black. Bordered by dramatic designs and sculpted "Harley-Davidson" logos.

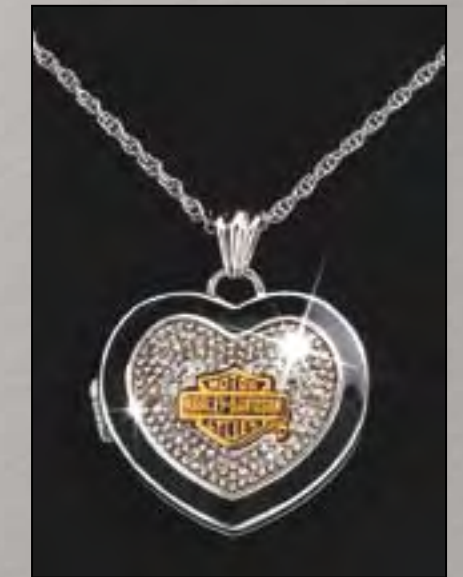
Pendant approximately 1" (2.5 cm) in length. Chain 18" (45.7 cm) in length. Enlarged to show detail.



D4J8290 Desert Rider Necklace

For the woman who is as strong as she is beautiful! Skillfully crafted of solid sterling silver and set with genuine turquoise stones, your necklace is accented with a graceful eagle and a bold, turquoise gemstone teardrop.

Eagle pendant approximately 1½" (3.8 cm) in width x 1" (2.5 cm) in length. Turquoise stone hangs approximately ½" (1.3 cm) on a 1" (2.5 cm) chain that includes the "Harley-Davidson" logo; chain approximately 16" (40.6 cm) in length.



D4J8568 Live to Ride Locket

When your heart belongs to Harley-Davidson®, you want the world to know it. Bold and beautiful locket opens to reveal a place for those closest to your heart. Sterling silver with diamond accents and 24 karat gold enhancement.

Enlarged to show detail. Locket approximately 1" (2.5 cm) wide x 1¼" (3.2 cm) long. Chain 18" (45.7 cm) in length.



Spirit of "Harley" Stacking Bracelet
D4J9001 = Small
D4J9002 = Medium
D4J9003 = Large

Three individual bracelets in one, each accented in black nickel. The center band features silhouettes of the Bar & Shield logo spaced with white topaz studs. Both the top and lower bands sparkle with marcasites.



D4J8246 Ladies' Biker Bracelet

Plated with rhodium and accented with 24 karat gold, this tribute to street style features the "Harley-Davidson" logo dangling from a bike chain bracelet that tells the world you're "Harley" and you're proud.

Approximately 7" (17.8 cm) with a 1" (2.5 cm) wide "Harley-Davidson" logo charm.



Men's and Ladies' Matching Set

Rumble and Roll Ring – Silver Version

Spectacular spinning ring, featuring an inner band that moves as freely as you do. Solid sterling silver.

Available in full sizes only, 5-10. Enlarged to show detail. Individual ring part numbers listed in catalog index.



Spirit of "Harley" Stacking Ring

Three rings in one, each crafted of solid sterling silver accented in black nickel. Features silhouettes of the Bar & Shield logo with diamond studs and marcasites.

Available in full sizes only, 5-10. Enlarged to show detail. Individual ring part numbers listed in catalog index.



Charm Ring

Keep your "Harley-Davidson" spirit moving, no matter where the road takes you. Crafted of solid sterling silver, accented with 24 karat gold.

Available in full sizes only, 5-10. Enlarged to show detail. Individual ring part numbers listed in catalog index.



Forever Ring

Sterling silver featuring a black onyx stone framed with marcasites. Crowned with an "H-D" logo accented with 24 karat gold.

Available in full sizes only, 5-10. Enlarged to show detail. Individual ring part numbers listed in catalog index.



NEW!

Live to Ride Ring

NEW! A timeless Harley-Davidson® slogan inspires an eternity-style ladies' ring crafted of sterling silver and kissed with black nickel and gleaming 24 karat gold.

Available in full sizes only, 5-10. Enlarged to show detail. Individual ring part numbers listed in catalog index.



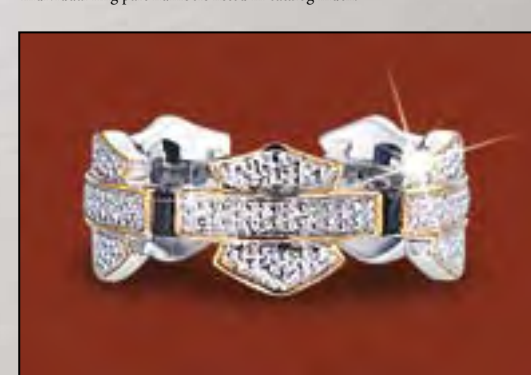
NEW!

Men's and Ladies' Matching Set

Wheels of Fire Ring

NEW! A dramatically styled ladies' ring crafted of solid sterling silver, featuring the Harley-Davidson® Bar and Shield masterfully sculpted in dramatic high relief with flames richly accented in 24 karat gold. A bold symbol of your independence.

Available in full sizes only, 5-10. Enlarged to show detail. Individual ring part numbers listed in catalog index.



Eternity Ring

Sculptured in sterling silver. Designed with pavé silver "Harley-Davidson" logos, accented with 24 karat gold borders and banded by black sapphires.

Available in full sizes only, 5-10. Enlarged to show detail. Individual ring part numbers listed in catalog index.



Stacking Ring

Together they form the fabulous "Harley-Davidson" emblem. Each sculptured in solid sterling silver and each lavished with glittering marcasite stones.

Available in full sizes only, 5-10. Enlarged to show detail. Individual ring part numbers listed in catalog index.

HARLEY-DAVIDSON® LADIES' JEWELRY

HARLEY-DAVIDSON® LADIES' JEWELRY

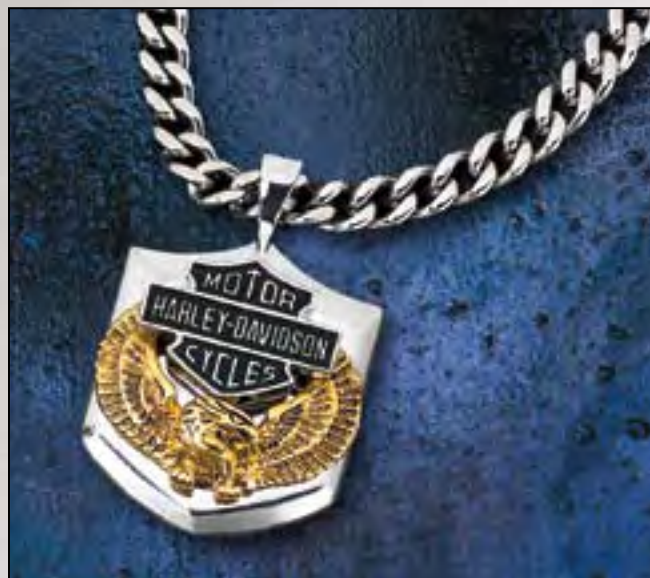


NEW!

D4J8977 Custom Chrome Pendant

NEW! Customize your look with road-worthy Harley-Davidson® style. Sculptured sterling silver pendant with black enamel accents is polished to a chrome-like finish. Complete with heavy-duty box-link chain.

Pendant approximately 1 3/8" (3.5 cm) in diameter. Chain approximately 20" (50.8 cm) in length and 3/16" (5 mm) wide.



D4J8784 Wings of Freedom Men's Pendant

Bold steel shield with the "H-D" logo sculpted of steel and hand-set on a sterling silver eagle accented in 24 karat gold. Complete with distinctive stainless steel chain.

Pendant approximately 1 1/2" (3.8 cm) long x 1" (2.5 cm) wide. Chain approximately 20" (50.8 cm) in length.



Harley-Davidson® motorcycles are the ultimate symbols of freedom, independence and adventure. There's a mystique about these magnificent motorcycles, a legend that's grown with the company. William Harley and Arthur Davidson built their first motorcycles in 1903. Success was swift.

Harley-Davidson® motorcycles served in both world wars, transporting Allied troops on every battlefield on earth. They became the standard for law enforcement use. They gained fame, winning competitions, appearing in Hollywood films and being ridden by film stars.

Today, Harley-Davidson® motorcycles are the most collected and the most famous. Every motorcycle fulfills someone's dream.



D4J8291 Iron Eagle Torque Bracelet

Skillfully crafted of solid brass, this classic torque bracelet features the proud profile of a fierce Harley-Davidson® screaming eagle on each end cap. Enhanced with rhodium plating and 24 karat gold accents. Boldly engraved with the famous Harley-Davidson® name.

Fits wrists up to 7" (17.8 cm) in diameter.



NEW!

Night Flame Bracelet
D4J8958 = SMALL
D4J8959 = MEDIUM

NEW! The classic Harley-Davidson® flames on this bold and powerful men's bracelet, accented with rich rhodium and black antiquing.

Small fits wrists up to 7 1/2" (19 cm) in diameter; Medium fits wrists up to 8 1/2" (21.6 cm) in diameter.



Wings of Freedom Bracelet **D4J8781 = SMALL** **D4J8782 = MEDIUM** **D4J8783 = LARGE**

The ultimate symbol of freedom, strength and raw power. The bold band and chain are solid stainless steel. The "Harley-Davidson" Bar & Shield logo is sculpted of stainless steel and hand-set on an eagle of sterling silver with 24 karat gold-plating.

Small up to 7 1/2" (19.1 cm), Medium 7 1/2" (19.1 cm) to 8 1/4" (21 cm), Large 8 1/4" (21 cm) to 9" (22.9 cm). Enlarged to show detail.



Ready to Roll Bracelet **D4J8706 = SMALL** **D4J8707 = MEDIUM** **D4J8708 = LARGE**

Express the rugged individualist that makes you – you! This powerful men's bracelet features the famous Bar & Shield logo accented in 24 karat gold and set in a black nickel-plated face inspired by a genuine "Harley" tire tread. Stylish, masculine and "Harley" every inch of the way. Bracelet plate is sterling silver with accents of rhodium and 24 karat gold; links are stainless steel.

Small up to 7 1/2" (19.1 cm), Medium 7 1/2" (19.1 cm) to 8 1/4" (21 cm), Large 8 1/4" (21 cm) to 9" (22.9 cm). Enlarged to show detail.

NEW!



Live to Ride II Ring

NEW! A classic Harley-Davidson® slogan inspires a timeless and bold men's ring. Crafted in sterling silver with rich black antiquing.

Available in full sizes only, 8-14. Enlarged to show detail. Individual ring part numbers listed in catalog index.

NEW!



Night Flame Ring

NEW! The sleek sheen of polished silver sets off classic Harley-Davidson® flames in this bold and powerful men's ring crafted of polished and antiqued sterling silver.

Available in full sizes only, 8-14. Enlarged to show detail. Individual ring part numbers listed in catalog index.

NEW!



Silver Skull Ring

NEW! Harley-Davidson® is about more than style. Show your passion goes bone-deep with this iconic men's ring crafted of rich sterling silver with black nickel accents.

Available in full sizes only, 8-14. Enlarged to show detail. Individual ring part numbers listed in catalog index.

Men's and Ladies' Matching Set



Rumble and Roll Ring – Silver Version

Spectacular spinning ring, featuring an inner band that moves as freely as you do. Solid sterling silver.

Available in full sizes only, 8-14. Enlarged to show detail. Individual ring part numbers listed in catalog index.



Live to Ride Ring

Sculptured in solid sterling silver with accents of 24 karat gold. Features a spectacular bald eagle against a brilliant black background.

Available in full sizes only, 8-14. Enlarged to show detail. Individual ring part numbers listed in catalog index.



Tribal Ring

Solid sterling silver with a polished midnight onyx stone in the center bordered by flames racing up each side. Vibrant with accents of 24 karat gold.

Available in full sizes only, 8-14. Enlarged to show detail. Individual ring part numbers listed in catalog index.



Wings of Freedom Ring

Bold steel band with sculpted "Harley-Davidson" logo hand-set on a 24 karat gold-plated eagle.

Available in full sizes only, 8-14. Enlarged to show detail. Individual ring part numbers listed in catalog index.

Men's and Ladies' Matching Set



Wheels of Fire Ring

Solid sterling silver "Harley-Davidson" Bar & Shield logo is masterfully sculpted in dramatic high relief. Flames are richly accented in 24 karat gold.

Available in full sizes only, 8-14. Enlarged to show detail. Individual ring part numbers listed in catalog index.



Black Knight Ring

Forged of sterling silver, accented in black nickel. Embellished with a solid 14 karat gold "Harley-Davidson" logo, mounted on a black onyx knight's shield flanked by stylized eagle wings.

Available in full sizes only, 8-14. Enlarged to show detail. Individual ring part numbers listed in catalog index.



Patriotic Ring

When the Stars and Stripes meet the Bar & Shield, you can feel the power! A rugged, heavyweight men's ring made of sterling silver, featuring sculptures of Old Glory and the American Eagle flanked by two Harley-Davidson® Bar & Shield emblems and lavishly coated in 24 karat gold. Enhanced by sculptured studs, offset by antiqued sterling silver.

Available in full sizes only, 8-14. Enlarged to show detail. Individual ring part numbers listed in catalog index.

Motorcycle Pocket Watches

Harley-Davidson® Motorcycle Pocket Watches

Eighteen timepieces, each with the cover honoring a legendary Harley®, the face inspired by the bike's speedometer and the winder simulating the gear sprocket. Every spring-activated lid features a Harley-Davidson® logo and is enhanced by hand-applied enamel. Each watch is complete with a quartz movement, handsome pouch, watch chain and its own custom display stand.

Watches approximately 2" (5.1 cm) in diameter. Stands range from approximately 3¼" (8.3 cm) to 5" (12.7 cm) in height.



**B20XR92 Heritage Softail®
Motorcycle Pocket Watch
with Pouch, Chain and Stand**



**B20XR95 Fat Boy®
Motorcycle Pocket Watch
with Pouch, Chain and Stand**



**B20Y083 Heritage Springer®
Motorcycle Pocket Watch
with Pouch, Chain and Stand**



**B20XR97 1948 Panhead
Motorcycle Pocket Watch
with Pouch, Chain and Stand**



**B20XR93 Ultimate Chopper
Motorcycle Pocket Watch
with Pouch, Chain and Stand**

TM & © 2010 Columbia Pictures Industries, Inc. All Rights Reserved.



**B20YZ34 Sportster®
Motorcycle Pocket Watch
with Pouch, Chain and Stand**



**B20XR96 Electra Glide®
Motorcycle Pocket Watch
with Pouch, Chain and Stand**



**B20YZ32 Billy Bike
Motorcycle Pocket Watch
with Pouch, Chain and Stand**

TM & © 2010 Columbia Pictures Industries, Inc. All Rights Reserved.

HARLEY-DAVIDSON® POCKET WATCHES

HARLEY-DAVIDSON® POCKET WATCHES



B20Y235 1936 Knucklehead
Motorcycle Pocket Watch
with Pouch, Chain and Stand



B20Y233 Low Rider®
Motorcycle Pocket Watch
with Pouch, Chain and Stand



B20Y258 1949 Hydra-Glide™
Motorcycle Pocket Watch
with Pouch, Chain and Stand



B20Y256 1958 Duo-Glide™
Motorcycle Pocket Watch
with Pouch, Chain and Stand



B20Y236 Road King®
Motorcycle Pocket Watch
with Pouch, Chain and Stand



B20Y237 1942 WLA Military
Motorcycle Pocket Watch
with Pouch, Chain and Stand



B20Y257 1903 First Harley-Davidson®
Motorcycle Pocket Watch
with Pouch, Chain and Stand



B20Y259 Super Glide®
Motorcycle Pocket Watch
with Pouch, Chain and Stand

HARLEY-DAVIDSON® POCKET WATCHES

HARLEY-DAVIDSON® POCKET WATCHES

Motorcycle Pocket Watches



B20ZY60 1998 Dyna® Wide Glide® Motorcycle Pocket Watch with Pouch, Chain and Stand



B20ZY61 1977 XLCR Café Racer™ Motorcycle Pocket Watch with Pouch, Chain and Stand



D1X3713 Motorcycle Pocket Watch Custom Wall Display

Crafted of hardwood and enhanced with chrome-like bolsters on each corner. Holds six watches with stands.

Approximately 14 7/8" (37.8 cm) high x 12 1/4" (31.1 cm) wide. (Watches and stands sold separately.)



D1X4228 Pocket Watch II Custom Wall Display

Crafted of hardwood and enhanced with chrome-like bolsters on each corner. Holds six watches.

Approximately 10 1/2" (26.7 cm) high x 9 1/4" (23.5 cm) wide. (Watches sold separately.)

Legends of Freedom Pocket Watches

Harley-Davidson® Legends of Freedom Pocket Watches

These precision quartz pocket watches feature legendary Harley-Davidson® motorcycles on a sculptured spring-action lid, accented in 24 karat gold, antiqued sterling silver or black nickel. Each watch is complete with pouch, chain and display stand enhanced by the world-famous "Harley-Davidson" logo.

Watches approximately 2" (5.1 cm) in diameter. Stand approximately 1" (2.5 cm) in height.



B11E308 1936 Knucklehead Pocket Watch with Pouch, Chain and Stand



B11E309 1949 Panhead Pocket Watch with Pouch, Chain and Stand



B11E307 1957 Sportster® Pocket Watch with Pouch, Chain and Stand



B11E304 1958 Duo-Glide™ Pocket Watch with Pouch, Chain and Stand



B11E306 1990 Fat Boy® Pocket Watch with Pouch, Chain and Stand



B11E305 1998 Road King® Pocket Watch with Pouch, Chain and Stand

Harley-Davidson® Pocket Watches II

Kick into gear with twelve high-intensity pocket watches that capture the personality, individuality and independence of the “Harley” lifestyle! Spring-action lids feature dramatic renditions of the famous “Harley-Davidson” name. Each watch complete with a precision quartz movement, chain and protective pouch.

Watches approximately 2" (5.1 cm) in diameter.



B11E045 An American Classic
Pocket Watch with Pouch and Chain



B11E046 Midnight Ride
Pocket Watch with Pouch and Chain



B20C309 Wings of Glory
Pocket Watch with Pouch and Chain



B20C329 Ride Like Fire
Pocket Watch with Pouch and Chain



B11E047 Raw Power
Pocket Watch with Pouch and Chain



B11E048 Phantom Rider
Pocket Watch with Pouch and Chain



B20C331 The Tribe That Rides
Pocket Watch with Pouch and Chain



B20D162 Ride Free
Pocket Watch with Pouch and Chain



B11E049 Steel Lightning
Pocket Watch with Pouch and Chain



B11E050 Full Throttle
Pocket Watch with Pouch and Chain



B20C333 Badge of Honor
Pocket Watch with Pouch and Chain



B20C773 One With the Wind
Pocket Watch with Pouch and Chain

HARLEY-DAVIDSON® POCKET WATCHES

HARLEY-DAVIDSON® POCKET WATCHES

Custom Chrome Pocket Watches

Harley-Davidson® Custom Chrome Pocket Watches

NEW! Inspired by genuine custom chrome motorcycle components, this edgy pocket watch collection features richly sculptured spring-activated lids accented with black nickel and pure 24 karat gold. Each precision quartz timepiece arrives with a pouch, watch chain and display stand bearing the Harley-Davidson® logo.

Watches approximately 2" (5.1 cm) in diameter. Stand approximately 1" (2.5 cm) in height.



NEW!



B11F146 INFERNO
Pocket Watch with Pouch, Chain and Stand

B11F147 VORTEX
Pocket Watch with Pouch, Chain and Stand



B11F148 EDGE
Pocket Watch with Pouch, Chain and Stand



B11F149 VOLTAGE
Pocket Watch with Pouch, Chain and Stand



B11F150 CYCLONE
Pocket Watch with Pouch, Chain and Stand



B11F151 COMBUSTION
Pocket Watch with Pouch, Chain and Stand

Colorized Coins



B12E690 1957 Sportster® **B13E690** 1958 Duo-Glide™ **B14E690** 1949 Panhead **B15E690** 1968 Electra Glide® **B16E690** 1990 Fat Boy®

Reverse Side

The Heritage of Harley-Davidson® U.S. Silver Eagle Dollar Coin Collection

The World Premiere Collection of color-enhanced U.S. Silver Eagle Dollar Coins authorized by Harley-Davidson®. Five Brilliant Uncirculated condition coins, official legal tender. Measuring over 1 5/8" (40.6 mm) in diameter, and with one full troy ounce of .999 Fine Silver per coin, these are the largest and purest silver coins ever produced by the U.S. Mint. Complete with Certificate of Authenticity signed by Hon. Jay W. Johnson, 36th Director of the United States Mint.

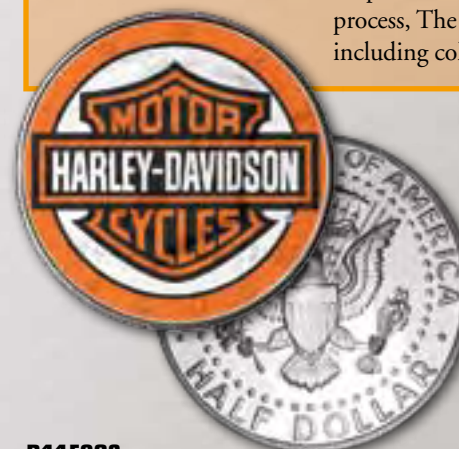
Each coin measures approximately 1 5/8" (40.6 mm) in diameter. Display case measures approximately 7" (17.8 cm) x 4 1/4" (10.8 cm).



D1P2409
Collection
Display Case

Custom-Enhanced Coins by The Franklin Mint

Coin products make wonderful gifts – rich in history, they have always been viewed as valuable keepsakes to cherish and pass along to future generations. Utilizing a unique proprietary customization process, The Franklin Mint is able to custom-enhance legal tender coins with many distinctive finishes, including colorization, holograms and gold-plating.



History of Harley-Davidson® Coins

NEW! Genuine Brilliant Uncirculated U.S. Half-Dollar coins, each with the obverse side specially color-enhanced commemorating a great Freedom machine! Complete with protective acrylic capsule and Certificate of Authenticity.

Each coin measures approximately 1 1/4" (30.6 mm) in diameter.

NEW!

B11F092 U.S. Kennedy Half-Dollar Emblazoned with Harley-Davidson® Logo

Genuine Brilliant Uncirculated U.S. Half-Dollar coin with color-enhanced obverse. Reverse features the heraldic eagle with shield, olive branch, arrows and stars. Coin enclosed in protective acrylic capsule and complete with Certificate of Authenticity. A great gift for every Harley® enthusiast!

Each coin measures approximately 1 1/4" (30.6 mm) in diameter.



C001503
1903 Serial
Number One

C001504
1942 WLA Military

C001508
1986 Heritage Softail®

Dealer Exclusive Coins

A great opportunity to promote your dealership with an inexpensive gift with a high perceived value. The Franklin Mint design team will create a unique collectible just for you! • Ideal for dealership rides and charity events. Low minimum order quantity and rapid turnaround time. • Wide variety of enhancements and numerous packaging options available.

HARLEY-DAVIDSON® POCKET WATCHES

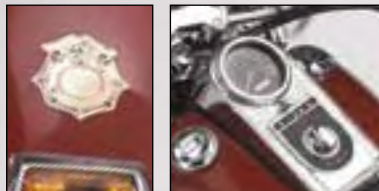
HARLEY-DAVIDSON® COLORIZED COINS



B11E835
2008 Harley-Davidson® Firefighter Special Edition
Limited Edition of 2,500.

Here's one emergency vehicle that's always on call for excitement. Re-creating an actual Heritage Softail® Classic, produced exclusively for active-duty and retired firefighters. Fine-tuned with operable steering, functional suspension, workable drive belt and kickstand, it's decked out in fire engine red with authentic firefighting badges.

Approximately 9 1/4" (23.2 cm) in length. Scale 1:10.



B11E348
2007 Harley-Davidson® Heritage Softail® Classic
Limited Edition of 9,900.

The Great Freedom Machine has never looked better. Combining that classic hardtail look with the cushiony feel of the famous concealed rear suspension, the '07 Heritage Softail® Classic is the perfect combination of nostalgia and modern technology. Add to the mix the prodigious power of the Twin Cam 96B™ engine, and you have the ultimate touring machine.

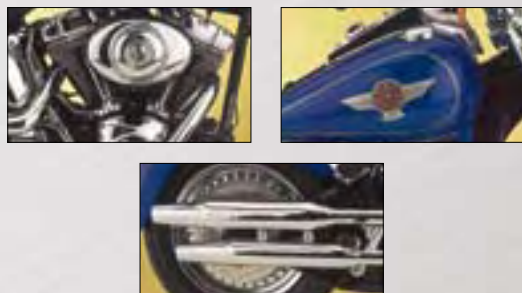
Approximately 9 1/4" (23.5 cm) in length. Scale 1:10.



B11E266
2006 Harley-Davidson® Fat Boy®

Feast your eyes on this big, bad boy! The 2006 Fat Boy® comes with a whole lot to love – signature Softail® styling, a power-pumping Twin Cam 88B™ and sparkling chrome from tip to shotgun tail.

Approximately 9 1/4" (23.5 cm) in length. Scale 1:10.



B11E349
2006 Harley-Davidson® Heritage Softail®
Limited Edition of 2,500.

This is the machine that marked the return of the Softail® to its roots – a bare-bones iron horse designed with the purist in mind. Re-creating every detail of the ultimate touring bike, this model is packed with authentic working features that include functional front and rear suspension, adjustable gear shift lever, kickstand and rotating drive belt. So lifelike, you can almost hear the roar of the mighty TC88B™ engine.

Approximately 9 1/4" (23.5 cm) in length. Scale 1:10.



B11E350
2006 Harley-Davidson® Softail® Night Train®
Limited Edition of 9,189.

For the seasoned rider to the novice, Harley's® "Train" is among the most exciting mounts available. And its bad-boy looks only add to its mystique. Now, you can own the definitive precision model of this Harley® classic, with every detail flawlessly captured down to the formidable Twin Cam 88® engine and staggered chrome pipes.

Approximately 9 1/4" (23.5 cm) in length. Scale 1:10.



B11E411
2006 Harley-Davidson® Softail® Deluxe
Limited Edition of 9,900.

Looking for the perfect combination of retro style and bold, road-hugging power? Heavy on the nostalgia, easy on the ride, this 2006 Harley-Davidson® Softail® Deluxe features all the appeal of the original, from the flawless Twin Cam 88B™ motor to the vintage whitewall tires.

Approximately 9 1/4" (23.5 cm) in length. Scale 1:10.



HARLEY-DAVIDSON® DIE-CAST MODELS

HARLEY-DAVIDSON® DIE-CAST MODELS



B11B990
2002 Harley-Davidson® VRSCA V-Rod®

It's a whole new breed of Harley® that combines the long, low-slung lines of the dragster with the raw power of the 1130 cc Revolution® engine. The awesome, audacious V-Rod® can be yours in the form of this sensational die-cast model. Hand-assembled from more than 125 separate parts. Authentic in every detail, from stretched wheelbase to sweeping double S-bend exhaust. Hand-painted and loaded with working features, it's a real eye-popper!

Approximately 9" (22.9 cm) in length. Scale 1:10.



B11YP95
1999 Harley-Davidson® Road King® Classic

A model of the great touring motorcycle with the heart of a street cruiser. You can see every detail – from the chrome and black fuel-injected Twin Cam 88® engine to the laced wheels and giant chrome headlight and opening saddlebags. Hand-painted and engineered with working brake and gear pedals, functional suspension and operable kickstand.

Approximately 9¼" (23.5 cm) in length. Scale 1:10.



B11YF03
1999 Harley-Davidson® Heritage Springer®

It's a legend reborn. Inspired by the '48 Panhead, this bike has all the elements of modern technology. And this extraordinary die-cast model captures all the sensational features of the real deal, from the incredibly detailed engine to the classic horseshoe oil tank. Hand-assembled from more than 125 parts. Loaded with working features. Hand-painted and richly accented in sparkling chrome-plate.

Approximately 9" (22.9 cm) in length. Scale 1:10.

B11E848
1965 Harley-Davidson® Electra Glide® with Sidecar

A legend as soon as it hit the road, the world-premiere Electra Glide® was powered by the last of the Panhead engines. It was also the first Harley® with a 12-volt electric starter system, making full-body stomps on the kick-start lever a thing of the past. Now, the smooth ride continues with this awesome precision re-creation, featuring every detail of the ultimate touring bike, right down to the powerful OHV Panhead engine. Complete with sidecar equipped with spare. Scale-sized helmet included.

Approximately 9" (22.9 cm) in length. Scale 1:10.



B11F076
1966 Harley-Davidson® FLH Electra Glide®

NEW! For many, the Electra Glide®, gleaming in chrome as it moves effortlessly down the highway, represents the ultimate "Harley" experience – a match-made-in-heaven combination of touring bike and rebel. Your precision model captures every detail of this "Harley-Davidson" icon – from the flawlessly detailed re-creation of the legendary Shovelhead engine to the fully instrumented control console. Painted by hand in dramatic Hi-Fi Blue, it will make its presence felt in any collection.

Approximately 9" (22.86 cm) in length. Scale 1:10.



NEW!

B11YF01
1903 Harley-Davidson® Motorcycle Diorama
Limited Edition of 9,500.

Honoring the birth of a legend! The very first production Harley-Davidson.® Showcased in a hand-painted diorama re-creating the original, factory built a century ago by William S. Harley and Arthur Davidson. Motorcycle is precision-engineered in 1:10 scale. Genuine leather seat and real rubber wheels. Full array of lifelike working features, including operable steering, road wheels and drive belt.

Display approximately 13" (33 cm) in length x 8" (20.3 cm) in width x 9¼" (24.8 cm) in height. Model motorcycle approximately 8" (20.3 cm) in length. Scale 1:10.





B11XN65
The Billy Bike

It is the symbol of the freewheeling spirit of the Sixties. The customized Harley-Davidson® Panhead ridden by Billy in the classic motion picture Easy Rider™. The motorcycle that made freedom roar for an entire generation. Assembled by hand to capture every astonishing feature. The fully detailed engine is accurate right down to each spark plug wire. The T-handlebars and sissy bar put you right on the rider's seat. And it's packed with true-to-life operating features such as kickstand, wheels that roll and brake and gear pedals that actually pivot! Painted by hand in the authentic colors, and yours complete with a scale-size safari hat, just like the one worn by Billy.

Approximately 9¾" (23.8 cm) in length. Scale 1:10.
TM & © 2010 Columbia Pictures Industries, Inc. All Rights Reserved.



B11WL73
The Ultimate Chopper

From the movie Easy Rider™, the radical customized Harley-Davidson® Panhead motorcycle. True to the original in every detail. The brawny OHV Twin Panhead engine, drenched in chrome-plate and so incredibly detailed you'll expect to hear it roar. The distinctive "tear drop"-shaped fuel tank, fishtail pipes and heavily chromed "ape-hanger" handlebars. There's the high "sissy bar" forming the backrest, the customized seat and headlamp. There's even the scale-size red-white-and-blue motorcycle helmet, just like the one worn in the movie, to add to the authenticity of this remarkable precision re-creation. Fully detailed and ready to roar with a complete array of operating features.

Approximately 10¼" (26 cm) in length. Scale 1:10.
TM & © 2010 Columbia Pictures Industries, Inc. All Rights Reserved.



B11A027
1958 Harley-Davidson® Duo-Glide™

Low slung, sleek and ready to ride...it's the bike that defined the '50s. All the details have been re-created – from its distinctive Panhead engine to the operable suspension that gave the bike its name to the chrome-covered shocks and hydraulic front forks. Operating features include kickstand, front and rear suspension, gearshift lever, foot brake lever, hand levers, drive belt, wheels and steering.

Approximately 9¼" (23.5 cm) in length. Scale 1:10.

B21YF85
Elvis® Harley-Davidson® Model KH

The definitive die-cast model of the King of Rock 'n Roll's® favorite motorcycle, the Harley-Davidson® KH. With handsome display and scale replicas of Elvis® guitar and riding cap. Hand-assembled from more than 130 separate parts.

Approximately 8¾" (21 cm) in length. Scale 1:10.



B11WW88
The First Panhead – 1948 FL

The machine that established Harley-Davidson® as the premiere motorcycle manufacturer. Recaptured in phenomenal detail, from the "wishbone" tubular frame to the rear fender-mounted saddlebags. A seat of real leather and loaded with authentic operating features.

Approximately 9" (22.9 cm) in length. Scale 1:10.



B11YE38
1942 WLA Military Motorcycle

This was the motorcycle that saw countless missions in war-torn Europe, and this superb model re-creates every detail. Assembled from more than 150 separate parts, it's hand-painted in olive drab with authentic military markings. Equipped with scale-size military gear, it's the perfect tribute to the Greatest Generation.

Approximately 10½" (25.7 cm) in length. Scale 1:10.



HARLEY-DAVIDSON® DIE-CAST MODELS

HARLEY-DAVIDSON® DIE-CAST MODELS



B11F075
1947 Harley-Davidson® Fire Chief Servi-Car
 Limited Edition of 5,000.

A legend as soon as it hit the road. For collectors and firefighting buffs, it's a 12-Alarm! This awesome 1:10 scale model of the reliable Harley® Servi-Car passes inspection with flying colors. From the precise re-creation of the flathead V-Twin engine to the full complement of working features that includes functional suspension, kickstand and handlebars. Scale-size accessories such as first aid kit and chief's helmet make for a powerful tribute to firefighters everywhere.

Approximately 11" (27.9 cm) in length. Scale 1:10.



B11F100
Harley-Davidson® Live to Ride
Porcelain Eagle Sculpture
 Limited Edition of 2,500.

If anything says FREEDOM as clearly and resoundingly as a Harley-Davidson® motorcycle, it is the awe-inspiring symbol of Harley® – the majestic eagle. Noble and bold, the eagle has been adopted by nations and empires, corporations and conquerors as a symbol of power and freedom – the very ideals that make it the perfect emblem for “Harley-Davidson.” For the eagle reflects the freedom and allure of the open road, as well as the power embodied by every Harley-Davidson® motorcycle. Created by the acknowledged master of wildlife art, George McMonigle, this powerful, lifelike portrayal of the American Bald Eagle is brilliantly rendered in fine, hand-painted porcelain. Hand-signed and hand-numbered.

Approximately 10½" (26.7 cm) tall x 9½" (24.1 cm), wing tip to wing tip.



D1X3135 Ultra Deluxe Display Case

Fine hardwood and glass display with custom-designed mirrored bottom panel.

Approximate size of base is 15¾" (38.1 cm) long x 10¼" (26 cm) wide x 10¾" (27.3 cm) high. Also accommodates 1:8 & 1:6 die-cast models. (Models sold separately.)



B11WL93
Standard Motorcycle Display with Black Background
 Fits all standard 1:10 scale motorcycle models. Durable hardwood base with removable acrylic cover.

Approximately 11¾" (28.9 cm) long x 5" (12.7 cm) wide x 6¾" (17.5 cm) high. (Model sold separately.)



B11WP68
Standard Motorcycle Display with Flag Background

Fits all standard 1:10 scale motorcycle models. Durable hardwood base with removable acrylic cover.

Approximately 11¾" (28.9 cm) long x 5" (12.7 cm) wide x 6¾" (17.5 cm) high. (Model sold separately). For larger models, utilize part number **D1X3286**.



B11A622
Turntable Display

The rotating turntable with its mirrored surface provides an all-around view. Just flick the switch and you can show off every glistening feature from front to back...even a view of the detailed underside, thanks to the mirrored surface!

Approximately 6" (15.2 cm) high x 11" (27.9 cm) in diameter. (Model sold separately.) Recommended for use with models under 4 lbs. (1.8 kg). Requires two D batteries (not included).



- **BUILT TO LAST!** Solid-state industrial construction with extra-strength locking casters and forged die-cast rails.
- **LIGHTED** Complete with JDR Halogen ceiling lights adjustable with dimmer switch and four LED light strips along each rail.
- **ADAPTABLE** Adjustable ¼" tempered glass shelves with mirrored top and bottom panels.
- **MARKETING** Silent salesperson, complete with two optional side-mounted literature racks for Franklin Mint catalogs.
- **SECURE** Lockable and complete with lockable bottom storage area.

Display-HDL
Franklin Mint
Display Fixture
Lighted

Display-HDU
Franklin Mint
Display Fixture
Unlighted



B11Z136 Harley-Davidson® Monopoly®: The Collector's Edition Limited Edition of 5,000.

An exclusive, high-octane edition of the most popular board game of all time! Rich with accents of sterling silver and 24 karat gold. Complete with hardwood-framed playing board and a full complement of sculptured Harley® gaming tokens. Authorized by Harley-Davidson® and Hasbro.

Game board approximately 21¾" (55.3 cm) square.

PARKER BROTHERS®, MONOPOLY®, the distinctive design of the game board, the four corner squares, the distinctive elements of the board and the playing pieces are trademarks of Hasbro, Inc. for its property trading game and game equipment. © 2010 Hasbro, Inc. All Rights Reserved. Manufactured and Distributed by The Franklin Mint. Made in Malaysia, China, and the United States.



"Harley" Town Plate Panorama

A dynamic series of four plates by acclaimed artist Paul Costello. Packed with signage and classic motorcycles. Crafted of fine porcelain, hand-numbered and bordered in platinum. Edition limited to 45 firing days. Custom-designed wall display.

- B11ZN81 Softail® Garage Plate**
- B11ZN83 Sportster® Pool Hall Plate**
- D1X3826 Plate Display**

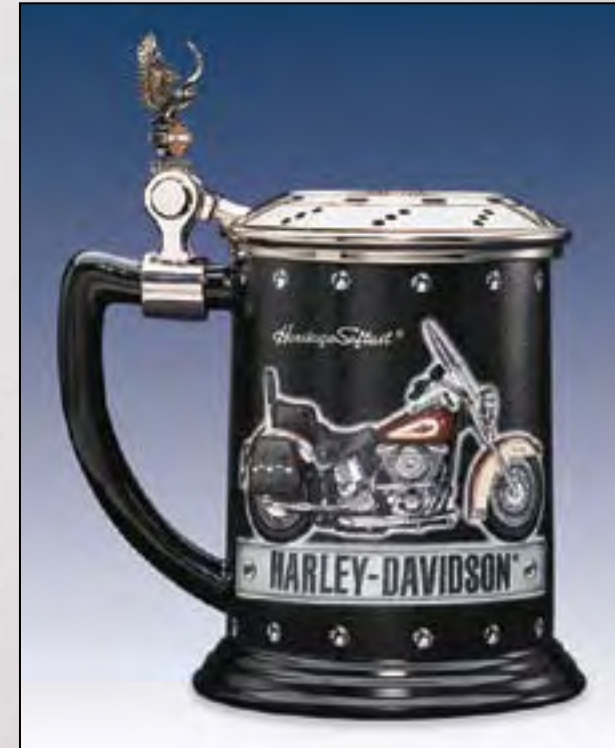
- B11ZN82 Electra Glide® Leather Shop Plate**
- B11ZN84 Panhead Diner Plate**

Plates approximately 8½" (21.6 cm) wide x 6½" (16.5 cm) high. Display approximately 36½" (91.8 cm) long x 3¼" (8.3 cm) deep.

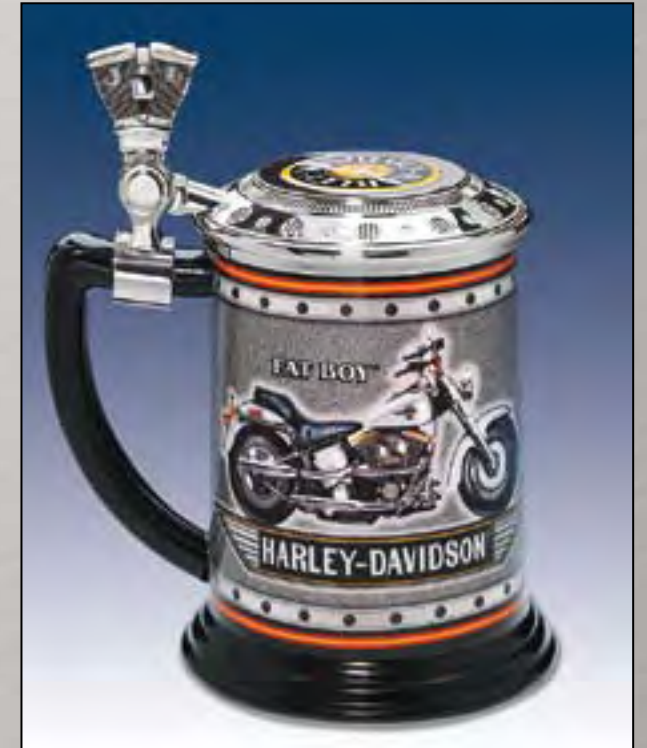
Harley-Davidson® Tankards

Legends of the open road are captured to perfection on tankards crafted of fine porcelain. Tankards are emblazoned with the familiar "Harley-Davidson" logo, along with a full-color, hand-painted illustration. Each is fitted with a cast-metal lid with intricately sculptured thumbpiece.

Tankards approximately 6" (15.2 cm) in height.



B11ZB76 Heritage Softail® Tankard



B11ZJ94 Fat Boy® Tankard



B11ZJ95 Billy Bike Tankard



B11ZJ96 Heritage Springer® Tankard

TM & © 2010 Columbia Pictures Industries, Inc. All Rights Reserved.



B11ZJ98 Sportster® Tankard



B11ZJ97 Ultimate Chopper Tankard

TM & © 2010 Columbia Pictures Industries, Inc. All Rights Reserved.



D1X3776 Harley-Davidson® Tankard Display

It's a showcase worthy of the name Harley-Davidson®. The perfect display for your prized tankard collection. Ruggedly handsome, yet designed to complement any decor! Crafted with the look and feel of real black leather and accented with gleaming chrome-accented bolsters at each corner. Designed to conveniently showcase up to six tankards. Perfect for your home or office. It will arrive fully assembled and ready to hang on any wall.

Actual size is 21 1/8" (53.6 cm) high x 13" (33 cm) wide. (Tankards sold separately.)

Harley-Davidson® Wheels of Fire Pocket Knives

Intricately sculpted and accented in 24 karat gold or precious metal plating, the awesome Harley® takes center stage on a sculptured handle enhanced with bright enamel insets. Featuring the Bar & Shield logo and the proud profile of the "Harley" eagle. The name of the bike is etched into the stainless steel blade. Each knife comes with padded and zippered case. Custom display available for the entire collection.

Each knife measures approximately 6 7/8" (17.5 cm) long, when opened. Display approximately 19 1/2" (49.5 cm) long.



B11E655 Heritage Softail® Pocket Knife



B11E715 Fat Boy® Pocket Knife



B11E717 Duo-Glide™ Pocket Knife



B11E719 Road King® Pocket Knife



B11E718 Electra Glide® Pocket Knife



B11E716 Sportster® Pocket Knife



D1X4242 Wheels of Fire Pocket Knife Display (Knives sold separately.)

NECKLACES, EARRINGS AND PENDANTS

Table listing jewelry items like Crossroads Birthstone Necklaces, Live to Ride Necklace, Open Spaces Necklaces, etc., with item numbers and prices.

LADIES' RINGS

Table listing ladies' rings by size (5-10) and item name, such as Birthstone Ring January - Garnet, Live to Ride Ring, etc.

LADIES' BRACELETS

Table listing ladies' bracelets like Live to Ride Bracelet, Black Onyx Bracelet, Tribal Bracelet, etc.

MEN'S RINGS

Table listing men's rings by size (8-14) and item name, such as Live to Ride II Ring, Night Flame Ring, Silver Skull Ring, etc.

MEN'S BRACELETS

Table listing men's bracelets like Iron Eagle Torque Bracelet, Night Flame Bracelet, Wings of Freedom Bracelet, etc.

MOTORCYCLE POCKET WATCHES

Table listing motorcycle pocket watches like Heritage Softail, Fat Boy, Ultimate Chopper, etc., with item numbers and prices.

LEGENDS OF FREEDOM POCKET WATCHES

Table listing Legends of Freedom pocket watches like 1936 Knucklehead, 1949 Panhead, 1957 Sportster, etc.

POCKET WATCHES II

Table listing various pocket watches like An American Classic, Midnight Ride, Raw Power, etc.

CUSTOM CHROME POCKET WATCHES

Table listing custom chrome pocket watches like Inferno, Vortex, Edge, Voltage, Cyclone, Combustion.

COLORIZED COINS

Table listing colorized coins like 1957 Sportster Silver Eagle Dollar, 1958 Duo-Glide Silver Eagle Dollar, etc.

1:10 SCALE MOTORCYCLES

Table listing 1:10 scale motorcycles like 2008 Harley-Davidson Firefighter Special Edition, 2007 Harley-Davidson Heritage Softail Classic, etc.

MOTORCYCLE DISPLAYS

Table listing motorcycle displays like Ultra Deluxe Display Case, Standard Motorcycle Display with Black Background, etc.

SCULPTURE

Table listing sculptures like Harley-Davidson Live to Ride Porcelain Eagle Sculpture.

MOTORCYCLE DIORAMA

Table listing motorcycle dioramas like 1903 Harley-Davidson Motorcycle Diorama.

GAME

Table listing games like Harley-Davidson Monopoly: The Collector's Edition.

6" TOWN PLATE PANORAMA

Table listing 6" town plate panoramas like Softail Garage Plate, Electra Glide Leather Shop Plate, etc.

TANKARDS

Table listing tankards like Heritage Softail Tankard, Fat Boy Tankard, Billy Bike Tankard, etc.

WHEELS OF FIRE POCKET KNIVES

Table listing wheels of fire pocket knives like Heritage Softail Pocket Knife, Fat Boy Pocket Knife, etc.

INDEX

INDEX